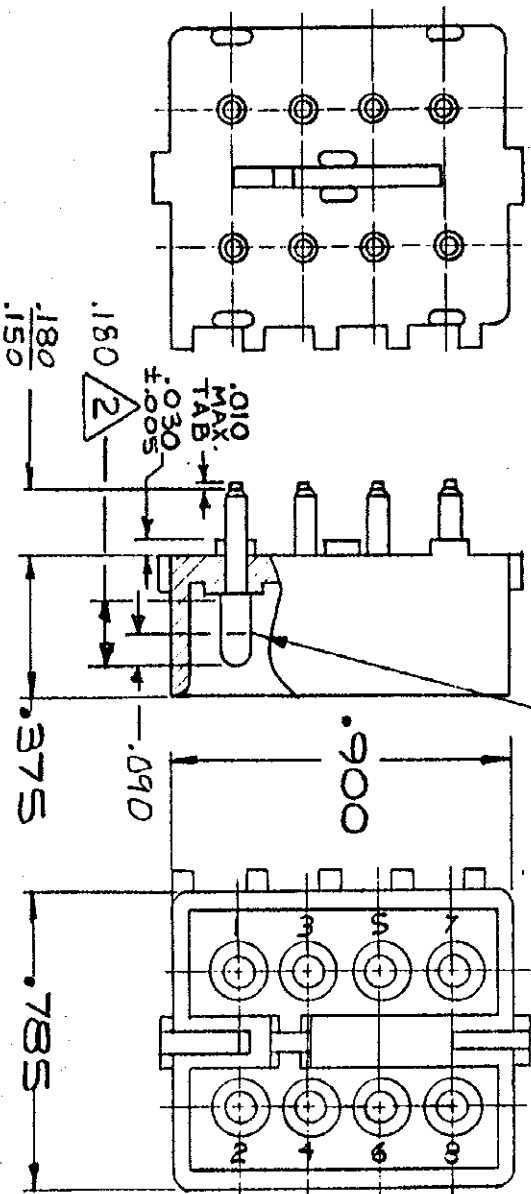


DRAWING MADE IN AMERICAN PROJECTION

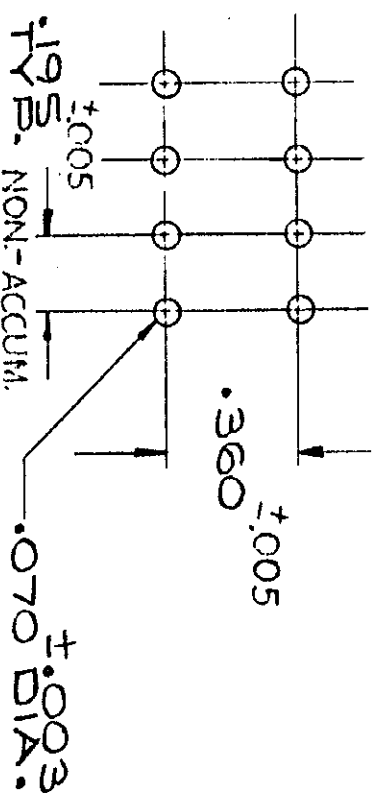
S



POINT OF MEASUREMENT

- 1. PARTS COMPLY WITH AMP SOLDERABILITY SPEC. NO. 109-11-3
- 2. CONTACT IS PLATED OVERALL WITH .000050 NICKEL, THEN .000030 GOLD OVER CONTACT LENGTH INDICATED AND MATTE TIN ON SOLDER TAIL END.

RECOMMENDED LAYOUT FOR .002 THICK P.C. BOARD



350212-1	NYLON - NATURAL	Copper Alloy - PRE-TIN	
ASSEMBLY NO.	HGS. MATL. - COLOR	PIN MATL. - FINISH	
350212-2	NYLON	COPPER ALLOY	GOLD Δ

PRINT DIST 59

DIMENSIONS IN INCHES. DO NOT SCALE PRINT.

AMP 1253 REV 11/65

P		OBS -1-2-1-9-1	
N		PER ECN CM-2706	
LTR		PER CM 2213	
DR	CHK	DATE	
		3/20/69	

REQUIRED PER ASSEMBLY

DESCRIPTION

350212-1

DR: *[Signature]* 3/20/69

CHK: *[Signature]* 3/20/69

DE: *[Signature]* 4-3-73

AMP: *[Signature]* 4-3-73

WIRE - RANGE - INSULATION: *[Blank]*

TOLENANCE EXCEPT AS NOTED: $\pm .015$

SCALE: *[Blank]*

NAME: 3 CIRCUIT MATE-N-LOK P.C. BOARD HEADER

CLASS: *[Blank]*

TYPE: PIN HEADER

LOC: CM

NO: B

NO: 350212

REV: P

REMARKS: CUSTOMER COPY REFERENCE ONLY

AMP INCORPORATED HARRISBURG, PENNA.

7

6

5

4

3

2

A